

LEGEND

- ES1

ACCESS CONTROL CONVENTIONAL ELECTRIC STRIKE.
- ES2

ACCESS CONTROL CONVENTIONAL ELECTRIC STRIKE C/W POWER TRANSFER HINGE.
- CR

ACCESS CONTROL CARD READER.
- CC1

CEILING MOUNTED CCTV CAMERA. CAT 6 UTP CABLE AND PLUG BY THE ELECTRICAL SUB CONTRACTOR.
- CC2

WALL MOUNTED CCTV CAMERA. CAT 6 UTP CABLE AND PLUG BY THE ELECTRICAL SUB CONTRACTOR.
- PI

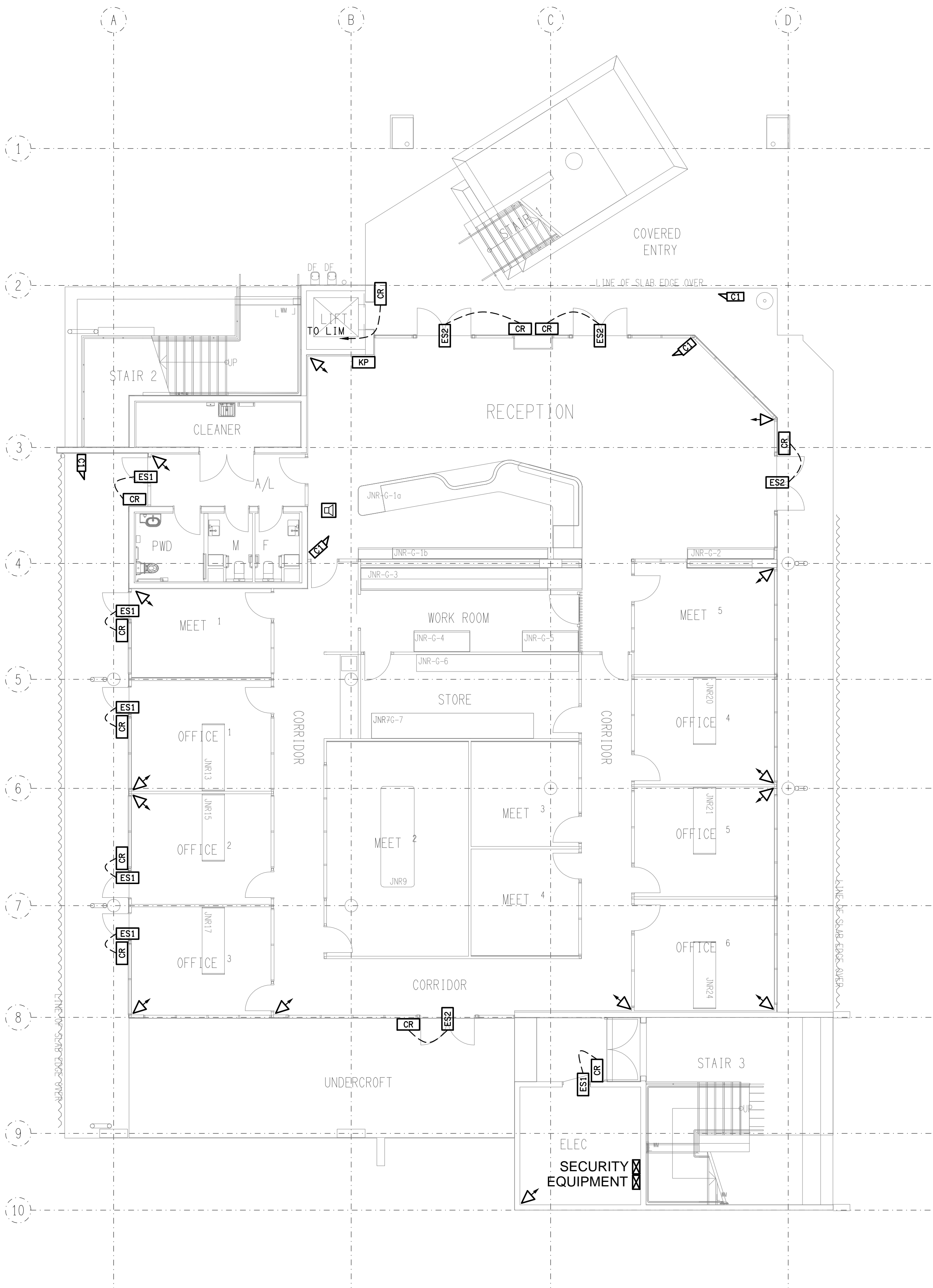
SECURITY PIEZO SIREN.
- DS

SECURITY DIRECTIONAL MOTION SENSOR.
- LIM

LIFT INTERFACE MODULE.
- KP

ARMING / DISARMING KEY PANEL.
- SE

SECURITY EQUIPMENT.



ELECTRICAL DESIGN GROUP BRISBANE
PTY LTD
ACN 092 710 793
TRADING AS:
ELECTRICAL DESIGN GROUP

THE COPYRIGHT OF THIS DRAWING
REMAINS THE PROPERTY OF THE
ELECTRICAL DESIGN GROUP.
USE FIGURED DIMENSIONS
IN PREFERENCE TO SCALE.
ALL DIMENSIONS TO BE
VERIFIED ONSITE.

ELECTRICAL DESIGN GROUP
ELECTRICAL BUILDING SERVICES CONSULTANTS
BRISBANE GOLD COAST

P.O.Box 15, Sherwood Q.4075
Phone: (07) 3278 4375
Email: brisbane@edg.net.au
Web: www.edg.net.au

PROJECT:
**KINGS CHRISTIAN COLLEGE PIMPAMA
SENIOR SCHOOL ADMINISTRATION - PIM21**

198 PIMPAMA JACOBS WELL ROAD, PIMPAMA, QUEENSLAND

A	TENDER	16/02/2026
REV:	DESCRIPTION:	DATE:

DRAWING: ELECTRICAL SERVICES SECURITY LEGEND & GROUND LEVEL PLAN	PROJECT NO: C3475a	DRAWING NO: S01	REVISION: A
SCALE: 1:100	AT A1		